



## 规格参数 Typical Specifications

电气特性 Electrical Characteristics	额定负荷 Rating	DC 5V 1mA
	接触电阻 Contact Resistance	200mΩ Max (初始值Initial value)
	绝缘电阻 Insulation Resistance	50 MΩ Min
	耐电压 Voltage Proof	AC 50V ( 50-60Hz ) 1 Minute
	电气寿命 Eletrical Life	200,000 cycles (Min)
机械/可靠性特性 Mechanical/ reliability Characteristics	定位旋转扭矩 Detent Torque	见具体规格表 See Detail Spec
	机械寿命 Mechanical Life	200,000 cycles (Min)
	使用温度 Operating Temperature	- 25°C ~ + 85°C
	使用湿度 Storage Humidity	≤85% RH
	可焊性 Solder Ability	245°C ± 5°C 3s ± 0.5s
	耐焊接热 Solder Heat Resistance	260°C ± 5°C 3s ± 1s

## 焊接条件 Soldering Conditions

手工焊 Hand soldering

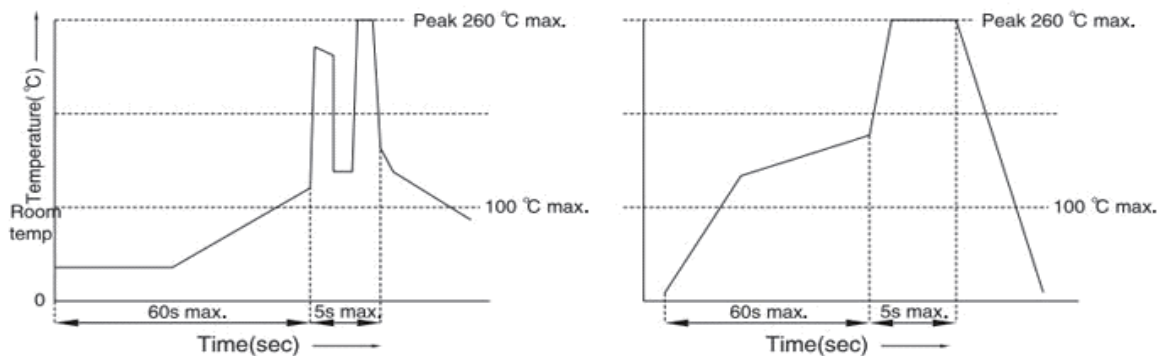
使用30瓦烙铁,烙铁尖端温度不超过350°C, 焊接时间3秒

Use a soldering iron of 30 watts,Controlled at 350°C approximately 3 seconds while solder applying.

波峰焊/回流焊 Wave soldering/Reflow solder

峰值温度不超过260°C, 焊接时间不超过5秒 (焊接温度曲线参考如下)

The peak temperature of the wave oven should be set to 260°C max. Condition for soldering temperature profile



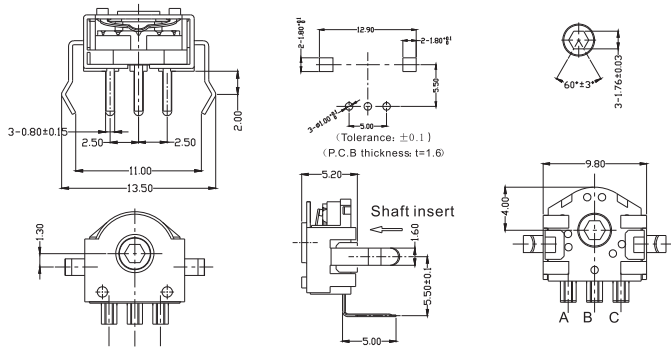
## GT10系列编码器订货型号指引 GT10 Series Encoder Ordering Instruction

GT10	11	A	0	24	A	01	2
编码器类别 Encoder Type (four digits)	产品安装高度代码 Code of product mounting height (two digits)	转组代码 Code of rotator (one digit)	扭力类别 Torque force (one digit)	定位数 Detent Code (two digits)	结构代号 Code of structure (one digit)	衍生序列 Derivative Item (two digits)	包装方式 Package (one digit)
表示GT10系列 编码器series GT10 encoder	05 H=5mm	A 红色转组六方孔尺寸为1.73mm red rotator,hexagonal hole size=1.73mm	0 无扭力 Without force	00 无定位,12脉冲 Without,12 pulses	A 一号结构 1# structure	无特殊性 Without special items	塑料袋 plastic bag
	07 H=7mm	B 灰色转组六方孔尺寸为1.69mm gray rotator,hexagonal hole size=1.69mm	1 偏轻扭力 Light force 15-25gf.cm	12 12定位,12脉冲 12 detents,12 pulses	B 二号结构 2# structure	01 特殊性序号 special items	1 吸塑包装 shrinked blastic package
	09 H=9mm	C 黑色转组六方孔尺寸为1.76mm black rotator,hexagonal hole size=1.76mm	2 标准扭力 Standard force 20-45gf.cm	24 24定位,12脉冲 24 detents,12 pulses	C 三号结构 3# structure	... 其他 others	2 管装 tube package
11 H=11mm			3 偏重扭力 Standard heavier force 40-70gf.cm				3 编带包装 tape package
13 H=13mm			4 重扭力 Heavier force 100gf.cm				... 其他 others
00 M垂直型 Vertical							
01 W垂直型 Vertical							

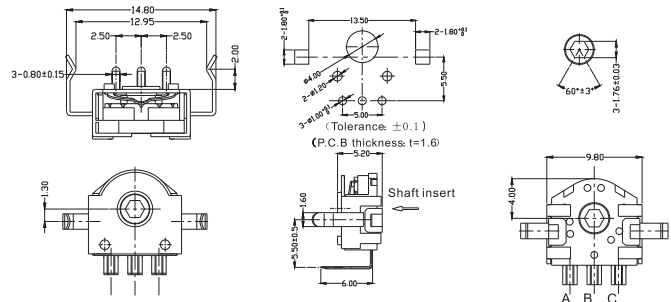
# ZING EAR

## ■外形尺寸/Dimensions

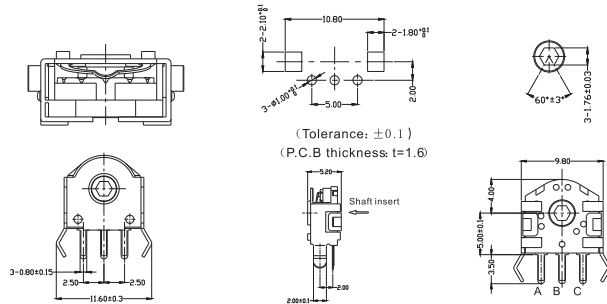
GT1000C224A



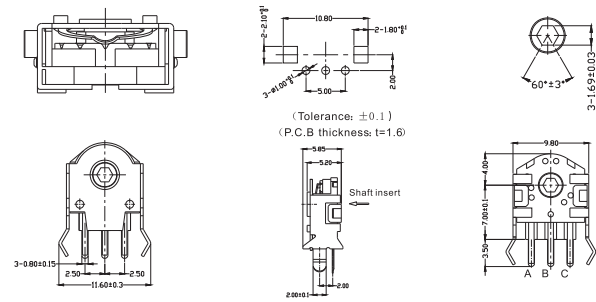
GT1001C224A



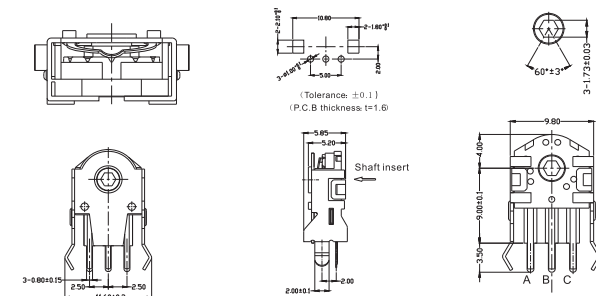
GT1005C224A



GT1007B224A

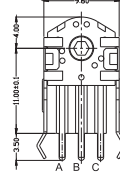
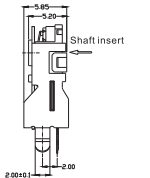
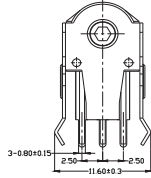
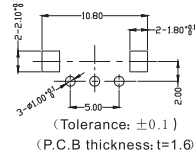
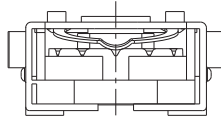


GT1009A224A

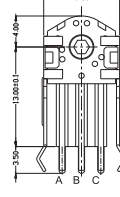
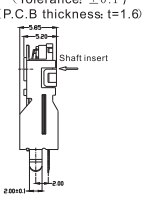
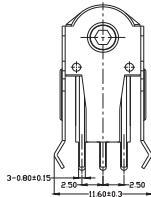
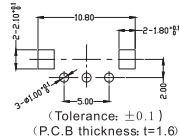
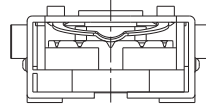


# ZING EAR

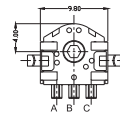
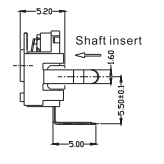
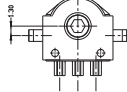
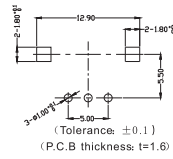
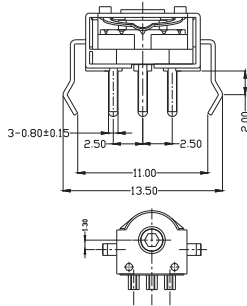
GT1011B224A



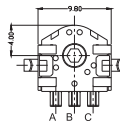
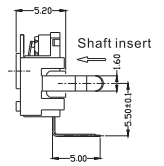
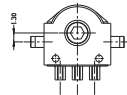
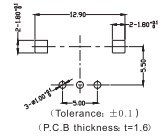
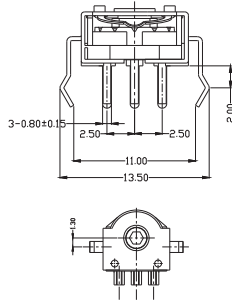
GT1013C224A



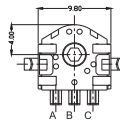
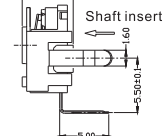
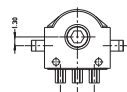
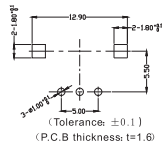
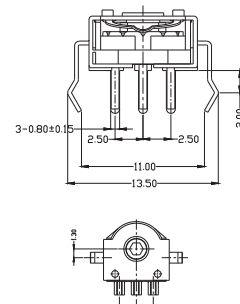
GT1000A224A



GT1000B224A

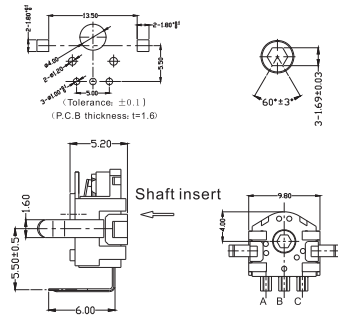
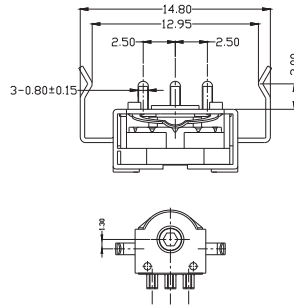
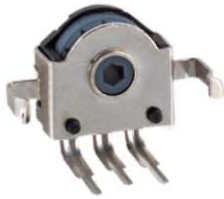


GT1000B112A

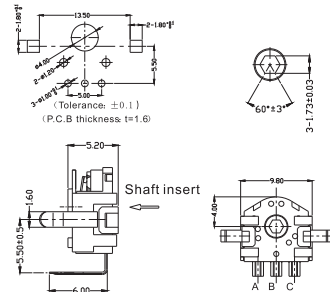
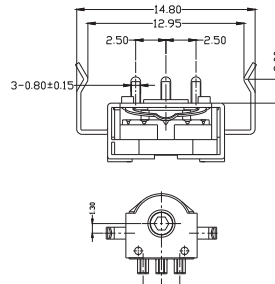
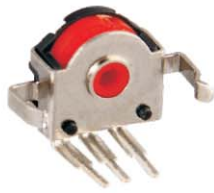


# ZING EAR

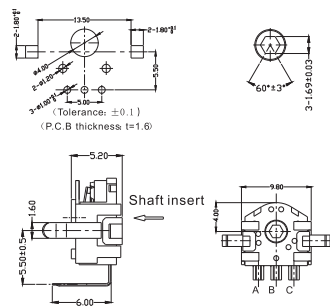
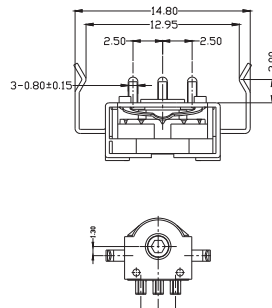
GT1001B224A



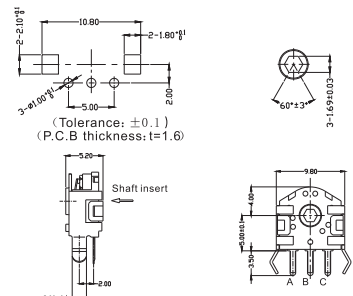
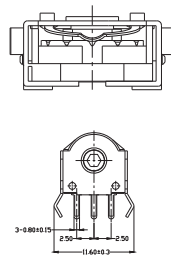
GT1001A224A



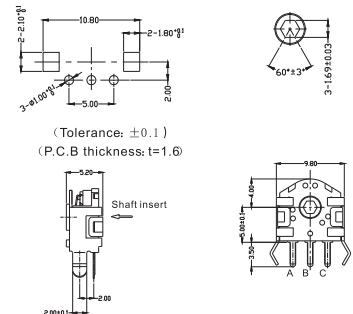
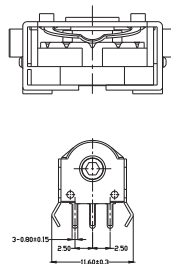
GT1001B112A



GT1005A224A

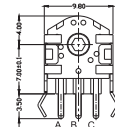
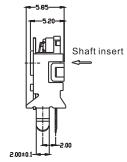
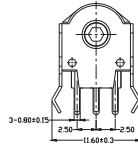
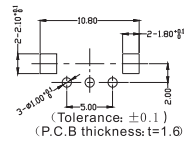
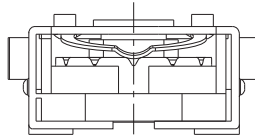


GT1005B224A

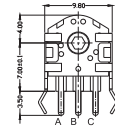
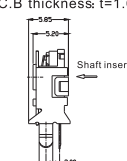
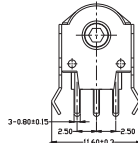
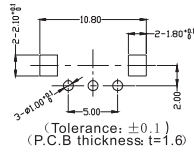
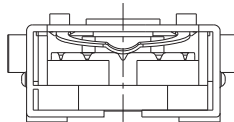


# ZING EAR

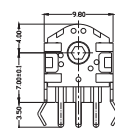
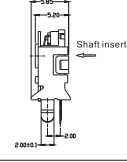
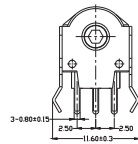
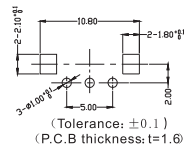
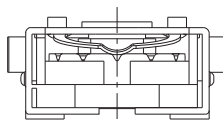
GT1007A224A



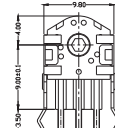
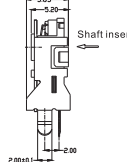
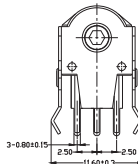
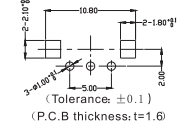
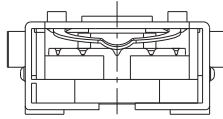
GT1007C224A



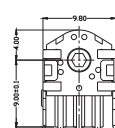
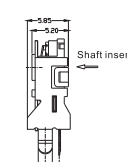
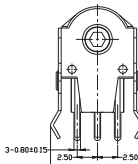
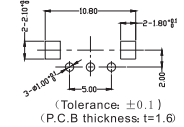
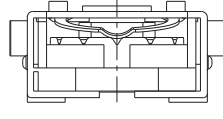
GT1007A112A



GT1009B224A

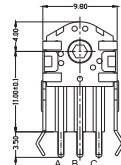
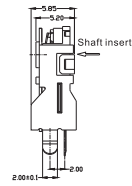
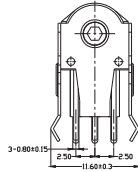
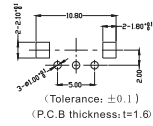
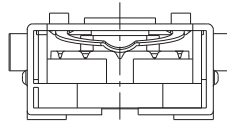


GT1009C224A

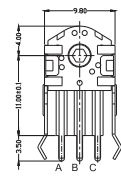
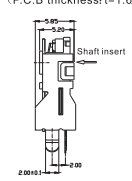
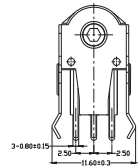
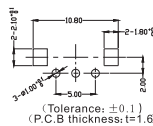
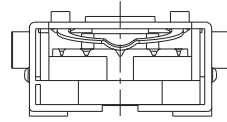


# ZING EAR

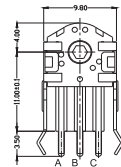
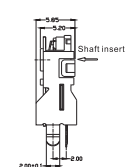
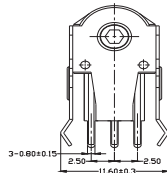
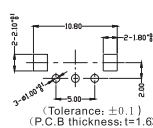
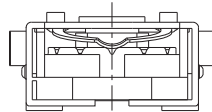
GT1011A224A



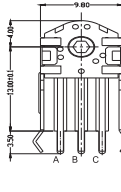
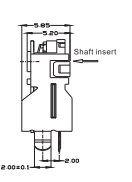
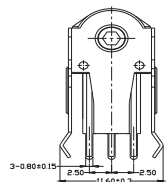
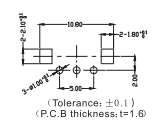
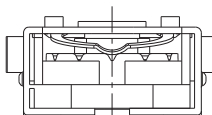
GT1011C224A



GT1011A212A



GT1013B224A



GT1013A212A

