

G6系列 / Series-G606



基本型双断微动开关

DPDT Micro Switch 1NO+1NC

■特点/Features

- ◆ 体型小巧，结构紧凑
 - ◆ 长寿命，高可靠性
 - ◆ 端子种类齐全
 - ◆ 双断型转换机构
 - ◆ 广泛应用于工业控制等领域
- Contact Size and Tight Configuration
 - Long Life, High Reliability
 - Variety Of Terminals
 - DPDT Double-Break Type
 - Widely used in Industry Control, etc.

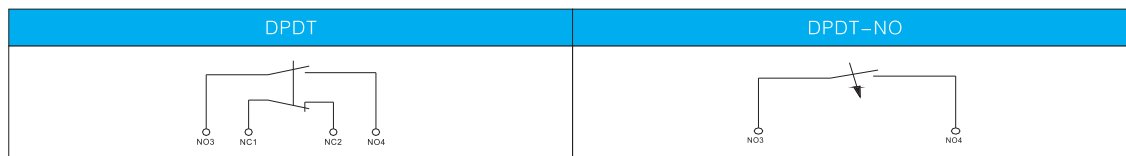
■应用/Application

- ◆ 浮筒
 - ◆ 排污泵
- Float
Sewage Pump

■特性参数/Parameters:

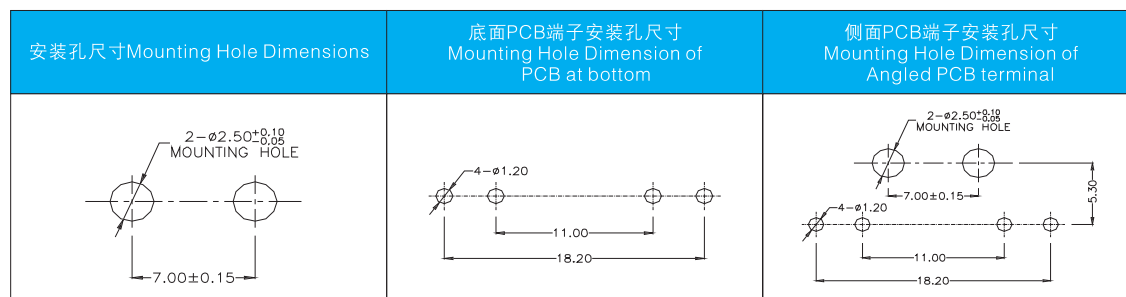
额定值Rating	06	0.5A 125/250VDC 0.5A/6A 125/250VAC, 1/4HP 250VAC
操作频率Operating Frequency	电气/Electrical	10 ~ 30 次/分 cycles/minute
	机械/Mechanical	120 次/分 cycles/minute
触点电阻 (初始值) / Contact Resistance(Initiative)		最大30 ~ 100mΩ (取决于类型) /30 ~ 100mΩ Max (Depends on P/Ns)
绝缘电阻/Insulation Resistance		在500VDC 时, 100MΩ Min./100MΩ Min.(at 500VDC)
抗电强度/Dielectric Strength		AC 750V RMS (50-60Hz)
保存温度/Storage Temperature		-40° C ~ +125° C
保存湿度/Storage Humidity		85%RH Max
寿命/Service Life	电气/Electrical	50,000 ~ 100,000次/Cycles (取决于类型/Depends on P/Ns)
	机械/Mechanical	500,000次
单重/Unit Weight		约1.96g (焊接型端子无手柄类型) Approx.110g (solder terminals,without lever)

■接触型式Circuit Configuration



■安装孔尺寸Mounting Hole Dimensions

(单位/Unit:mm)



■ 订货指引 Ordering Instruction

G6	06	200	S	00	A	A	XX
开关类别 Switch Type	额定负载 Electrical Rating	操作力(最大值) 数据在不带操作柄测得 Plunger/Max Operating Force at pin	端子类型 Terminal Style	操作柄类型 Lever Type	接触形式 Circuit Code	特别设计代码 Special Designator	特别设计代码 Special Designator
G6 系列 微动开关 G6 series micro switch	UL/Cul: 0.5A 125/250VDC 0.5A/6A 125/250VAC 1/4HP 250VAC 5E4 u 40T125	50gf 0.49N (仅适用于 0.1A 电流 /Only for 0.1A rating) (适用于无自复 位功能, 需带手柄操作 no automatic reset function, should be acted by lever)	长焊接端子 Long solder Terminal K	不带操作柄 柱式按拳 Pin Plunger 00	DPDT 双断点- D 1NO/1NC	通用型 General	此为特别指定代码, 当端子类型是 "T" 或操作力类型是 "F" 时说明此端子或操作力是特别设计的, 具体请参考产品规格来确定详细的差别 A special designer letter is used only when Terminal Type is "T" or Operating Force is "F" to specify that the terminals or Operating Force is special.Review Product Specification to deter
		200gf 1.96N (适用于自动复位型 Only for automatic reset function)	直PCB 端子 Straight PCB Terminal P	直柄 Straight lever 11	DPDT - NO E 双断点-常开	K 无自动复位	
		F 特殊操作力 Special Connect	侧面焊接端子 side solder terminal F	直柄 (尾部有孔) Straight lever(with hole) 12		其他 Other	
			右侧面PCB 端子 Right side PCB Terminal R	短直柄 Short Straight lever 13			
			左侧面PCB 端子 left side PCB Connect L	短直柄 Short Straight lever 16			
				其他 Other			

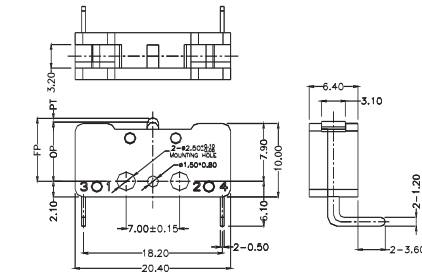
■ 端子类型 Terminal Type

◆ 端子厚度为0.5mm/Thickness of Terminals : 0.5mm

P型 直PCB端子/P Type Straight PCB Terminals	K型 长焊接端子/K Type Long Solder Terminals
L型 左侧面PCB端子/L Type Left Angled PCB Terminals	R型 右侧面PCB端子/R Type Right Angled PCB Terminals
F型 侧面焊接端子/R Type Lateral Solder Terminals	

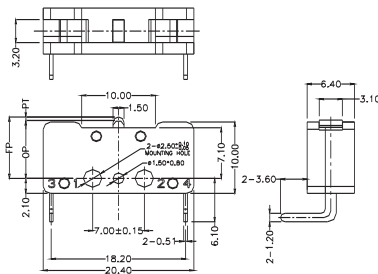
■ 外形尺寸和操作特性/Dimensions and Operating Characteristics

◆ G606-200R00E



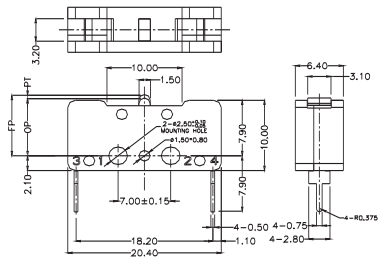
OF Max. (gf)	RF Min. (gf)	PT Max. (mm)	OT Min. (mm)	MD Max. (mm)	FP Max. (mm)	OP (mm)
200	40	1.5	0.25	0.45	9.5	7.7 ± 0.3

◆ G606-200L00E



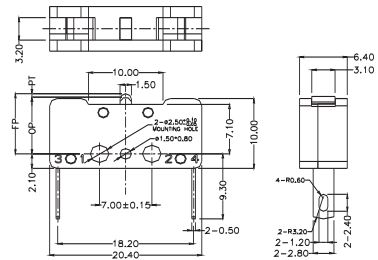
OF Max. (gf)	RF Min. (gf)	PT Max. (mm)	OT Min. (mm)	MD Max. (mm)	FP Max. (mm)	OP (mm)
200	40	1.5	0.25	0.45	9.5	7.7 ± 0.3

◆ G606-200P00E



OF Max. (gf)	RF Min. (gf)	PT Max. (mm)	OT Min. (mm)	MD Max. (mm)	FP Max. (mm)	OP (mm)
200	40	1.5	0.25	0.45	9.5	7.7 ± 0.3

◆ G606-200K00E



OF Max. (gf)	RF Min. (gf)	PT Max. (mm)	OT Min. (mm)	MD Max. (mm)	FP Max. (mm)	OP (mm)
200	40	1.5	0.25	0.45	9.5	7.7 ± 0.3

