

G6系列 / G6 Series

小型通用型微动开关

Miniature Micro Switch



■ 特点/Features

体形小巧, 紧凑
拥有全球安规认证
长寿命, 高可靠性
端子负载能力到10(2)A 1/4HP
端子操作柄齐全
广泛应用于汽车控制、家电控制、工业控制等领域

- Small Compact Size
- Global Safety Approvals
- Long Life and High Reliability
- Variety of Actuator and Terminals
- High Rating to 10(2)A, 1/4HP
- Customized Designs
- Widely used in Auto Control, Appliance Control, Industrial Control etc.

■ 应用/Application

- ◆ 电话/Phone
- ◆ 空调/Air-Conditioner
- ◆ 计算机/Computer
- ◆ 增湿器/Humidifier
- ◆ 报警器/Alarm
- ◆ 计时器/Timer
- ◆ 混合器与切肉机/Mixer&Meat Grinder
- ◆ 焊接枪/Welding Machine
- ◆ 氖电话/Neon Phone
- ◆ 传真机/Fax Machine
- ◆ 游戏控制杆/Game Controller

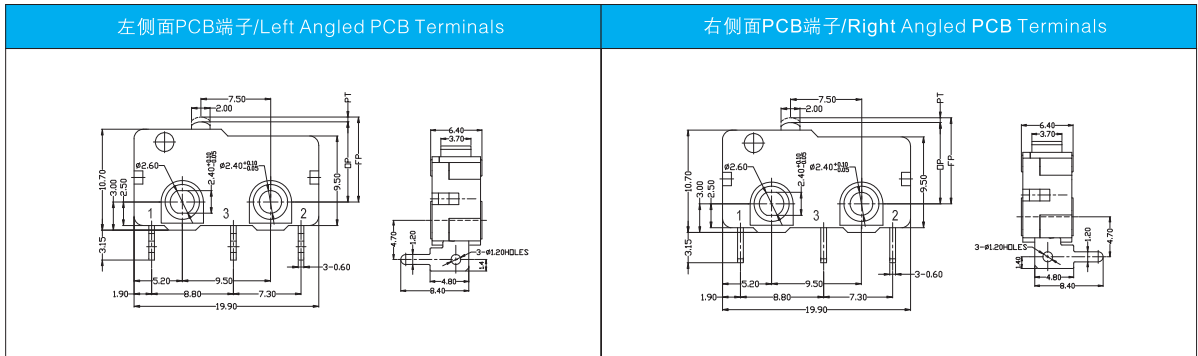
- ◆ 水泵/Pump
- ◆ 汽油探测器/Gas Detector
- ◆ 卷笔刀/Pencil Sharpener
- ◆ 钱币分类机/Money Sorter
- ◆ 食品加工机/Food Processor
- ◆ 电切刀/Electric Knife
- ◆ 玩具汽车/Toy Car
- ◆ 榨汁机/Juice Extractor
- ◆ 照明设备/Lighting Equipment
- ◆ 电动煎锅/Electric Frying pan

■ 特性参数/Parameters

| | | |
|---------------------------------------|---------------|---|
| 额定值/Rating | P1/P11/P12 | ENEC:0.1A 125/250V 48VDC 5E4 UL:0.1A 125/250VAC 48VDC 触点可选镀金/Gold Plated Contact Optional |
| | 05/051/052 | ENEC:5A 125/250VAC UL:5A 1/8HP 125/250VAC |
| | 10/101 | ENEC:10(2)A 125/250VAC u 25T125 UL:10.1A 1/4HP 125/250VAC 注意/Note:仅适用于"250gf"以上操作力/Only with "OF"over "250gf" |
| | 12 | ENEC:12 (6) A 125/250VAC u 40T125 UL:12A 125/250VAC 注意/Note:仅适用于"350gf"操作力/Only with 350gf OF |
| 操作频率/Operating Frequency | 电气/Electrical | 10~30次/分 cycles/minute |
| | 机械/Mechanical | 120次/分 cycles/minute |
| 初始接触电阻/Contact Resistance(Initiative) | | 100m Ω Max |
| 绝缘电阻/Insulation Resistance(at 500VDC) | | 100MΩ Min |
| 抗电强度/Dielectric Strength | | AC 1,000V RMS (50~60Hz) |
| 保存温度/Storage Temperature | | -25°C ~ +125°C |
| 保存湿度/Storage Humidity | | 85% RH Max |
| 寿命/Service Life | 电气/Electrical | 10,000 ~ 50,000次/cycles(取决于类型/Depend on part No.) |
| | 机械/Mechanical | 1,000,000次/cycles |

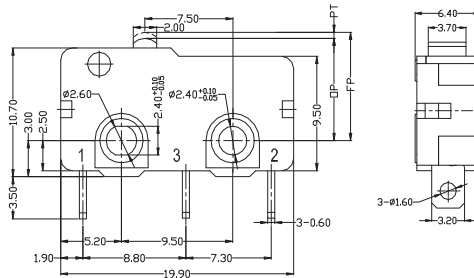
G6 系列微动开关订货型号指引 G6 Series Micro Switch Ordering Instruction

| G6 | 05 | 150 | S | 00 | A | A | XX |
|---|---|--|---|--|--------------------------------|--|---|
| 开关类别 Switch Type | 额定负载 Electrical Rating | 操作力(最大值) 数据在不带操作柄测得 Max Operating Force at pin Plunger | 端子类型 Terminal Style | 操作柄类型 Lever Type | 接触形式 Circuit Code | 特别设计代码 Special Designator | 特别设计代码 Special Designator |
| G6 系列 微动开关 G6 series micro switch | P1 ENEC/CQC: 0.1A 125/250VAC 48VDC 5E4 u 25T125 UL 0.1A 125/250VAC 48VDC 触点可选镀金 /Gold plated contact optional | 50 50gf 0.49N (仅适用于 0.1A 电流 /Only for 0.1A rating) | S 焊接端子 Solder Terminals | 00 不带操作柄 柱式按钮 No lever Pin Plunger | A SPDT 单级双投 | 通用型 General | 此处为特别设计代码,具体请参考产品规格书来确定详细的差别 Here means a special designator letter. Refer to Products Specification for detailed differences. |
| | 05 ENEC/CQC: 5A 125/250VAC 30VDC 5E4 u 25T125 UL: SA 1/8HP 125/250VAC 30VDC | 100 100gf 0.98N (仅适用于 0.1A 和 5A 电流 /Only for 0.1A and 5A rating) | P 直 PCB 端子 Straight PCB Terminals | 01 短直柄 16.7mm Short Straight Lever 0.66" | B SPST-NC 单级单投-常闭 | A 触点镀金(可选,仅适用于 G6P1 系列) Gold Plated Contacts(Optional, only for G6P1) | |
| | 10 ENEC/CQC: 10(2)A 125/250VAC u 25T125 UL: 10.1A 1/4HP 125/250VAC 备注:10A 的额定电流的开关的操作力仅有 250gf Note:Switch "10" rating is only available with OF over 250gf | 150 150gf 1.49N (Note:For G6P11,G6051,G610 1,Max.OF is 150gf) | R 右侧面 PCB 端子 Right side PCB Terminals (Note:仅适用于、Only available for G6P1,G605,G610) | 02 标准直柄 18.7mm Std.Straight Lever 0.74" | C SPST-NO 单级单投-常开 | D 特别用于大电流直流负载 High DC Rating Special use | |
| | 12 ENEC/CQC: 12(6)A 125/250VAC, u 40T125 UL:12A 125/250VAC 操作力仅适用于 350gf OF only with 350gf | 250 250gf 2.45N (Note:Only available for G6P1,G605,G610) | L 左侧面 PCB 端子 left side PCB Terminals (Note:仅适用于、Only available for G6P1,G605,G610) | 03 长直柄 24.8mm Long Straight Lever 0.98" | | ... 其他 Other | |
| | P11 ENEC/CQC: 0.1A 125/250VAC 48VDC 5E4 u 25T125 UL: 0.1A 125/250VAC 48VDC 触点可选镀金 /Gold plated contact optional 弹片式 spring plate type | 350 350gf 3.43N 主要适用于 G612/mainly for G612 | D 110# 快速非标准连接端子 2.80 x 0.6 mm quick connect Terminals 0.11" x 0.023" | 04 更长直柄 35.1mm Longer Straight Lever 1.39" | | | |
| | 051 ENEC/CQC: 5A 125/250VAC 5E4 u 25T125 UL/Cul: SA 1/8HP 125/250VAC 弹片式 spring plate type | F 特殊操作力 Special OF | E 110# 快速连接端子 2.80 x 0.5 mm quick connect Terminals 0.11" x 0.023" | 05 模拟滚轮手柄 18.0mm Std. Simulated Roller Lever 0.71" | | | |
| | 101 ENEC/CQC: 10(2)A 125/250VAC u 25T125 UL: 10.1A 1/4HP 125/250VAC 备注:10A 的额定电流的开关的操作力仅有 150gf Note:Switch with "10" rating are only available with "150" OF 弹片式 spring plate type | | ... 特殊端子 Special Terminals | 06 带滚轮手柄 16.6mm Roller Lever 0.65" | | | |
| | P12 0.1A 125/250VAC 48VDC 5E4 u 25T85 0.1A 125/250VAC 48VDC 触点可选镀金 /Gold plated contact optional 电木外壳 bakelite 弹片式 spring plate type | | | 07 小型模拟滚轮手柄 17.9mm Small Simulated Roller Lever 0.71" | | | |
| | 052 ENEC/CQC: 5A 125/250VAC 5E4 u 25T85 UL: SA 1/8HP 125/250VAC 电木外壳 bakelite housing 弹片式 spring plate type | | | 09 塑胶滚轮手柄 Plastic Roller Lever | | | |
| | | | ... 其他 Other | | | | |



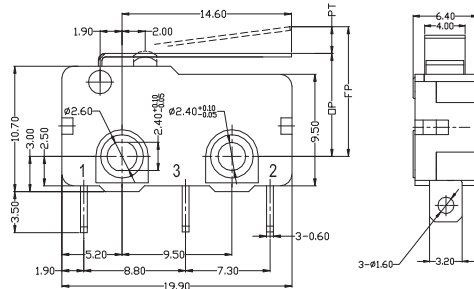
■外形尺寸和操作特性/Dimensions and Operating Characteristics

◆G6□□-□□□S00A



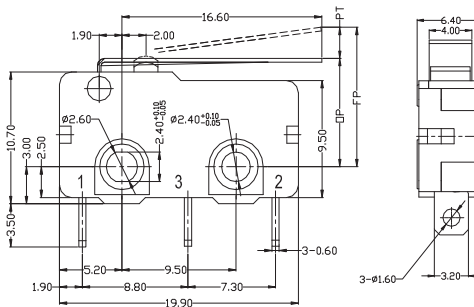
| OF Max. (gf) | RF Min. (gf) | PT Max. (mm) | OT Min. (mm) | DT Max. (mm) | FP Max. (mm) | OP (mm) |
|--------------|--------------|--------------|--------------|--------------|--------------|---------|
| -100 | 100 | 10 | 1.0 | 0.4 | 0.2 | 9.1 |
| -150 | 150 | 35 | 1.0 | 0.4 | 0.2 | 9.1 |
| -250 | 250 | 50 | 1.0 | 0.4 | 0.2 | 9.1 |
| -350 | 350 | 80 | 1.0 | 0.4 | 0.2 | 9.1 |

◆G6□□-□□□S01A



| OF Max. (gf) | RF Min. (gf) | PT Max. (mm) | OT Min. (mm) | DT Max. (mm) | FP Max. (mm) | OP (mm) |
|--------------|--------------|--------------|--------------|--------------|--------------|---------|
| -100 | 40 | 6 | 3.6 | 0.6 | 1.0 | 11.7 |
| -150 | 50 | 8 | 3.6 | 0.6 | 1.0 | 11.7 |
| -250 | 80 | 15 | 3.6 | 0.6 | 1.0 | 11.7 |
| -350 | 110 | 30 | 3.6 | 0.6 | 1.0 | 11.7 |

◆G6□□-□□□S02A



| OF Max. (gf) | RF Min. (gf) | PT Max. (mm) | OT Min. (mm) | DT Max. (mm) | FP Max. (mm) | OP (mm) |
|--------------|--------------|--------------|--------------|--------------|--------------|---------|
| -100 | 35 | 5 | 4.0 | 0.6 | 1.0 | 12.0 |
| -150 | 45 | 6 | 4.0 | 0.6 | 1.0 | 12.0 |
| -250 | 75 | 10 | 4.0 | 0.6 | 1.0 | 12.0 |
| -350 | 100 | 20 | 4.0 | 0.6 | 1.0 | 12.0 |

