

G10系列 / G10 Series

超小型微动开关 Subminiature Micro Switch



■特点/Features

- ◆ 体型小巧，结构紧凑
- ◆ 长寿命，高可靠性
- ◆ 端子种类齐全
- ◆ 配备各种形式操作柄
- ◆ 广泛应用于家用及工业控制等领域

- ◆ Small Compact Size
- ◆ Long Life and High Reliability
- ◆ Variety of Terminals
- ◆ Variety of Levers Optional
- ◆ Widely used in Appliance and Industry Control

■应用/Application

- ◆ 无线对讲机/ Walkie Talkie
- ◆ 鼠标/Mouse
- ◆ 电切刀/Electric Knife
- ◆ 电动订书机/Electric Stapler
- ◆ 电话/Telephone
- ◆ 计算器/Calculator
- ◆ 混合器与切肉刀/Mixer & Chopper
- ◆ 电锅/Electric Pan
- ◆ 电池充电器/Battery Charger
- ◆ 录像带卷绕机/Video Cassette Rewinder
- ◆ 无绳电话/Cordless Phone
- ◆ 报警器/Alarm
- ◆ 测试器/Tester Machine
- ◆ 家用电器/Home Appliance

■特性参数/Parameters:

额定值/Rating	P1	0.1A 48VDC/125VAC (可选镀金Gold plated optional)
	03	1A/3A 125VAC
操作频率 Operating Frequency	电气/Electrical	10~30次/分 cycles/minute
	机械/Mechanical	120次/分 cycles/minute
触点电阻 (初始值) Contact Resistance(Initial Value)		100mΩ Max (取决于类型/Depends on P/Ns)
绝缘电阻/Insulation Resistance(at 500VDC)		在500VDC 时/At 500VDC, 100MΩ Min.
抗电强度/Dielectric Strength		AC 600V RMS (50-60Hz)
保存温度/Storage Temperature		-40° C ~ +85° C
保存湿度/Storage Humidity		85%RH Max
寿命/Service Life	电气/Electrical	6,000 ~ 100,000 次/cycles (取决于类型/Depends on P/Ns)
	机械/Mechanical	1,000,000次/cycles (5,000,000次/cycles 可选Optional)
单重 / Unit Net Weight		约0.5g (直PCB无手柄类型) About 0.5g(Straight PCB type without lever)

G10系列微动开关订货型号指引 G10 Series Micro Switch Ordering Instruction

G10	P1	150	S	00	A	XX	XX
Switch Type 开关类别	Electrical Rating 额定负载	Max Operating Force at Pin Plunger 操作力(最大值) 数据在不带操作柄测得	Terminal Type 端子类型	Lever Type 操作柄类型	Circuit code 接触形式	Special Designator 特别设计代码	Special Designator 特别设计代码
G10 Series Micro-Switch	P1 ENEC/CQC: 0.1A, 48VDC/125VAC IE4 u 40T85 UL/CUL: 0.1A, 48VDC/125VAC	090 90gf Max	S 标准直焊端子 Solder Terminals	00 不带操作柄 No lever 柱式接掌 Pin Plunger	A SPDT 单极双投		
	03 ENEC/CQC: 1A/3A, 125VAC IE4 u 40T85 UL/CUL: 1A/3A, 125VAC	150 150gf Max	P 标准直插PCB端子 Straight PCB Terminals	01 短直手柄10.0mm Short Straight Lever 0.39"			
G10 系列 微动开关		... 其他 Other	Q 自锁型PCB端子 Snap in PCB Terminals	02 标准直手柄13.0mm Std. Straight Lever 0.52"		A 镀金 Gold Plated	
			M 直焊端子 Short Solder Terminals	03 长直手柄18.0mm Long Straight Lever 0.71"		B 仅适用于小电流 Only for low current	
			R PCB 右脚端子 Right Angled PCB Terminals	05 模拟滚轮 手柄 11.8mm Simulated Roller Lever 0.46"		12 无卤材料 Non-Halogen Material	
			L PCB 左脚端子 Left Angled PCB Terminals	07 小型模拟滚轮手柄 15.0mm Small Simulated Roller Lever 0.59"			
			K 长柄接端子 Long Solder Terminals	09 最长直手柄 30.0mm Long straight lever			
			... 特殊端子 Special Terminals	10 滚轮手柄 12.80mm Roller Lever			
			... 特殊手柄 Special Lever	... 特殊手柄 Special Lever			

G10系列 G10 Series

安装孔位、操作柄类型、接触形式、外形介绍、端子类 Mounting Hole, Lever Type, Circuit, Shape, Terminal Type

■端子类型 / Terminal Type

◆端子厚度为0.6mm / Terminal thickness:0.6mm

<p>S型/Type 直焊接端子 Straight Solder Terminals</p>	<p>P型/Type 直插PCB端子 Straight PCB Terminals</p>	<p>Q型/Type 自锁PCB端子 PCB snap-in (clip) Terminals</p>
<p>M型/Type 短焊接端子 Short Solder Terminals</p>	<p>R型/Type 右侧PCB端子 Right Angled PCB Terminals</p>	<p>L型/Type 左侧PCB端子 Left Angled PCB Terminals</p>
<p>K型/Type 长焊接端子 Long Solder Terminals</p>	<p>■接触形式图/Circuit Configuration</p> <p>SPDT</p>	

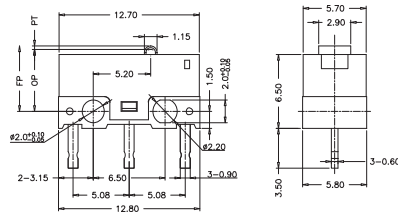
■安装孔尺寸Mounting Hole Dimension

(单位/Unit: mm)

<p>安装孔尺寸Mounting Hole Dimension</p>	<p>PCB端子安装孔尺寸 Mounting Hole Dimension of PCB Terminals</p>
<p>右向PCB端子安装孔尺寸 Mounting Hole Dimension of Right Angled PCB Terminals</p>	<p>左向PCB端子安装孔尺寸Mounting Hole Dimension of Left Angled PCB Terminals</p>

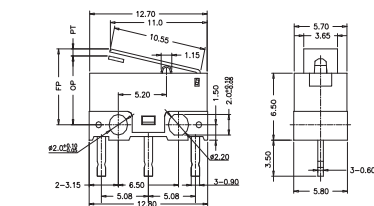
■外形尺寸和操作特性/Dimensions and Operating Characteristics

◆G10□□-□P00A



	OF Max. (gf)	RF Min. (gf)	PT Max. (mm)	OT Min. (mm)	DT Max. (mm)	FP Max. (mm)	OP (mm)
-090	90	15	0.65	0.2	0.2	6.0	5.5±0.3
-150	150	20					

◆G10□□-□P01A

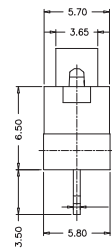
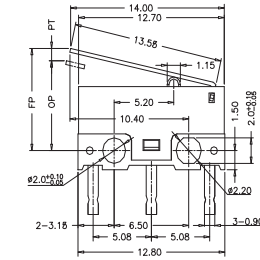


	OF Max. (gf)	RF Min. (gf)	PT Max. (mm)	OT Min. (mm)	DT Max. (mm)	FP Max. (mm)	OP (mm)
-090	40	6	2.5	0.3	0.6	8.0	6.25±0.8
-150	60	10					

ZING EAR

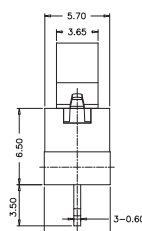
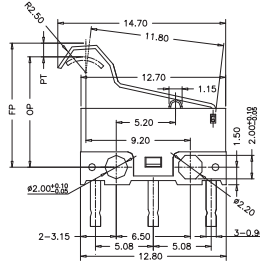


◆G10□□-□P02A



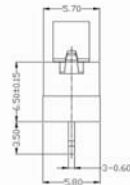
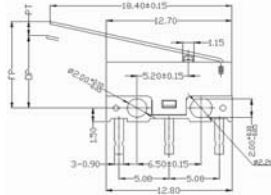
OF Max. (gf)	RF Min. (gf)	PT Max. (mm)	OT Min. (mm)	DT Max. (mm)	FP Max. (mm)	OP (mm)
-090	30	4	3.4	0.3	0.8	8.8
-150	50	8				

◆G10□□-□P05A



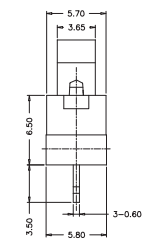
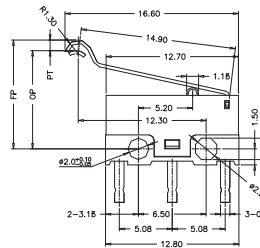
OF Max. (gf)	RF Min. (gf)	PT Max. (mm)	OT Min. (mm)	DT Max. (mm)	FP Max. (mm)	OP (mm)
-090	40	5	3.0	0.3	0.7	12
-150	50	8				

◆G10□□-□P03A



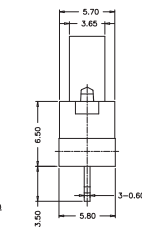
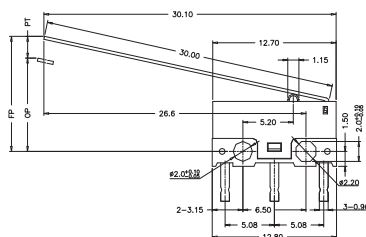
OF Max. (gf)	RF Min. (gf)	PT Max. (mm)	OT Min. (mm)	DT Max. (mm)	FP Max. (mm)	OP (mm)
-090	40	3	4	0.5	1	10
-150	50	5				

◆G10□□-□P07A



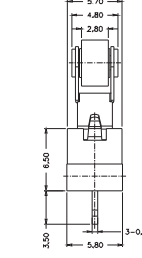
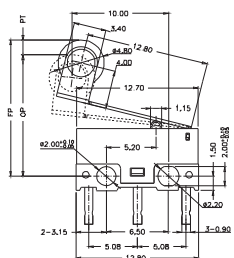
OF Max. (gf)	RF Min. (gf)	PT Max. (mm)	OT Min. (mm)	DT Max. (mm)	FP Max. (mm)	OP (mm)
-090	30	5	3.5	0.3	1.1	11.5
-150	50	8				

◆G10□□-□P09A



OF Max. (gf)	RF Min. (gf)	PT Max. (mm)	OT Min. (mm)	DT Max. (mm)	FP Max. (mm)	OP (mm)
-090	15	2	6.9	0.4	2.5	14.0
-150	23	3				

◆G10□□-□P10A



OF Max. (gf)	RF Min. (gf)	PT Max. (mm)	OT Min. (mm)	DT Max. (mm)	FP Max. (mm)	OP (mm)
-090	35	3	5.5	0.3	0.8	16.5
-150	50	6				